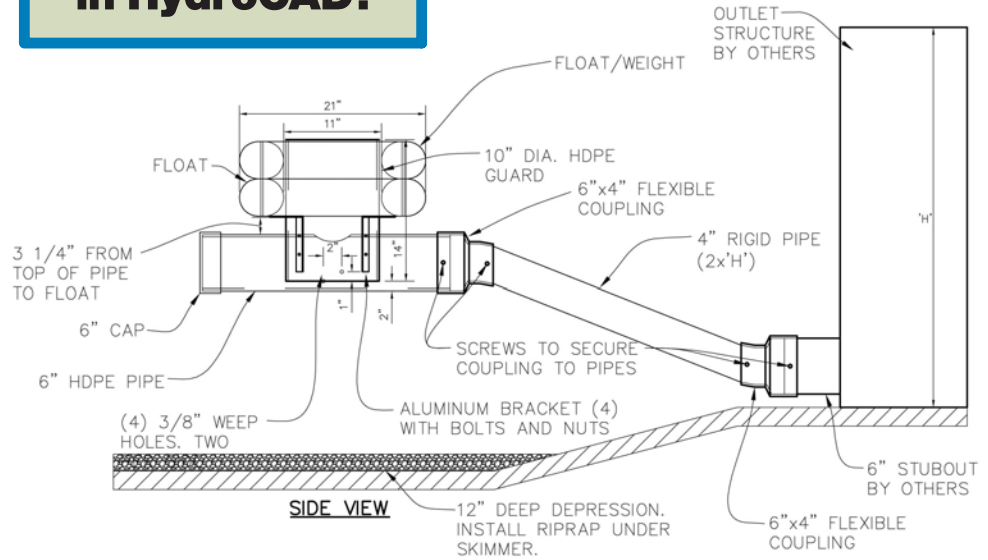


Marlee Float™ Skimmer

**Now Available
in HydroCAD!**

Marlee Float™			
	Skimmer Size	24 Hour Peak Flow Rate*	
		(cfd)	(cfs)
Model #1 MSRP \$695	1"	1,983	0.023
	1.5"	3,485	0.040
	2"	7,432	0.086
	2.5"	9,272	0.107
Model #2 MSRP \$1,375	3"	16,538	0.191
	4"	25,394	0.294
	5" (Model 2)	30,432	0.351
Model #3 MSRP \$3,775	5" (Model 3)	66,076	0.765
	6"	71,216	0.824
	8"	76,357	0.883

*CFD = Cubic Feet per Day **CFS = Cubic Feet per Second



Details, Comparison/Conversion Charts, Cut Sheets & Tutorials available at SWProductsUS.com



To find out more about the Marlee Float™ skimmer, visit SWProductsUS.com. For engineering and design questions, please contact **Jamie McCutchen** at jamie@swfeesaver.com

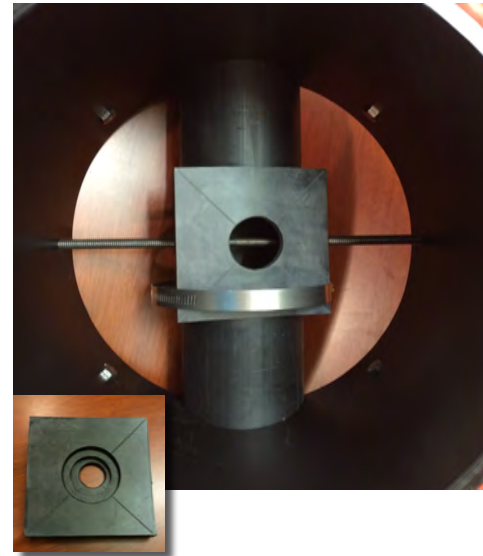


803 Roper Creek Drive
Greenville, SC 29615
855-697-9333

SWProductsUS.com



Marlee Float™ Skimmer



State of the Art Design

- Patent Pending Design
- Multiple DOT Approvals
- Made of HDPE pipe, polyethylene float and stainless steel fittings
- UV-resistant and virtually indestructible
- Fabricated to be part of the permanent outlet structure
- No moving parts
- Shielded weir prevents clogging
- Flow enters 4”-14” below water’s surface
- Unique design traps floatables in basin and increases sediment trapping efficiency
- Mud and debris do not get to outlet orifice
- Three models (4th coming soon!) to choose from with simple, cost-effective conversion kits to allow weir size to be easily changed
- Orifice saddles held securely in place with 2 pipe clamps
- Each model provides 3 to 4 flow rates with 1 device
- Third-party testing to verify flow rates and draw down times
- Ships pre-assembled – Simple 5-minute installation
- Contractor only has to provide barrel to connect to outlet structure

Cost-Effective Product